

スカイAカップ 2026プロボウリング レディース 新人戦



JPBA トーナメント オイルパターン

【JPBAレジェンドシリーズ TOKIMOTO Mitsukoパターン (41ft)】

※下記パターンを参考に、会場センターにてレーンメンテナンスを行います

Oil Pattern Distance:	41 Feet	Reverse Brush Drop:	26 Feet	Oil Per Board:	50 uL
Forward Oil Total:	16.2 mL	Reverse Oil Total:	9.95 mL	Volume Oil Total:	26.15 mL
Forward Boards Crossed:	324 Boards	Reverse Boards Crossed:	199 Boards	Total Boards Crossed:	523 Boards

	Start	Stop	Loads	Mics	Speed	Crossed	Start	End	Feet	T.Oil
1	2L	2R	1	50	10	37	0.0	0.0	0.0	1850
2	5L	5R	1	50	10	31	0.0	1.4	1.4	1550
3	6L	6R	2	50	14	58	1.4	5.3	3.9	2900
4	9L	9R	4	50	18	92	5.3	15.5	10.2	4600
5	10L	10R	1	50	18	21	15.5	18.0	2.5	1050
6	11L	11R	1	50	18	19	18.0	20.5	2.5	950
7	12L	12R	3	50	18	51	20.5	28.1	7.6	2550
8	13L	13R	1	50	18	15	28.1	30.6	2.5	750
9	2L	2R	0	50	22	0	30.6	36.0	5.4	0
10	2L	2R	0	50	30	0	36.0	41.0	5.0	0

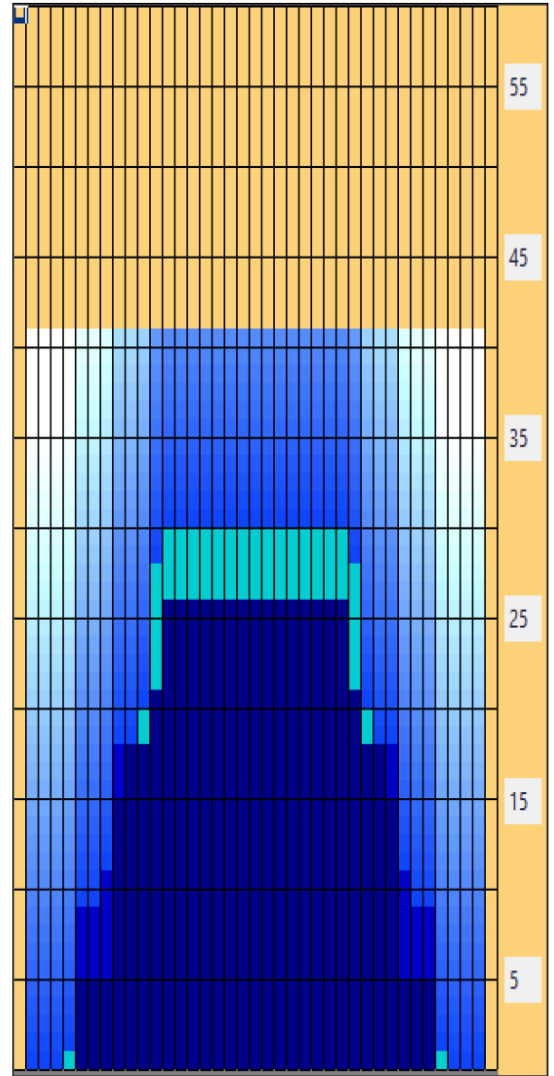
Navigation: Forward Reverse More

	Start	Stop	Loads	Mics	Speed	Crossed	Start	End	Feet	T.Oil
1	2L	2R	0	40	30	0	41.0	26.0	-15.0	0
2	13L	13R	2	50	18	30	26.0	20.9	-5.1	1500
3	12L	12R	1	50	18	17	20.9	18.4	-2.5	850
4	9L	9R	3	50	18	69	18.4	10.8	-7.6	3450
5	8L	8R	1	50	14	25	10.8	8.9	-1.9	1250
6	6L	6R	2	50	10	58	8.9	6.1	-2.8	2900
7	2L	2R	0	50	10	0	6.1	0.0	-6.1	0

Navigation: Forward Reverse More

Conditioner:
Type In or Select
One

- Forward
- Reverse
- Combined
- Buff



Item	3L-7L:18L-18R	8L-12L:18L-18R	13L-17L:18L-18R	18L-18R:17R-13R	18L-18R:12R-8R	18L-18R:7R-3R
Description	Outside Track:Middle	Middle Track:Middle	Inside Track:Middle	Middle: Inside Track	Middle:Middle Track	Middle:Outside Track
Track Zone Ratio	7.19	1.6	1	1	1.6	7.19

