

# シーズントライアル2023 ウィンターシリーズ

## レーンコンディション オイルパターン (44ft)

※下記パターンを参考にトーナメント委員会指導の下、会場センターにてレーンメンテナンスを行います

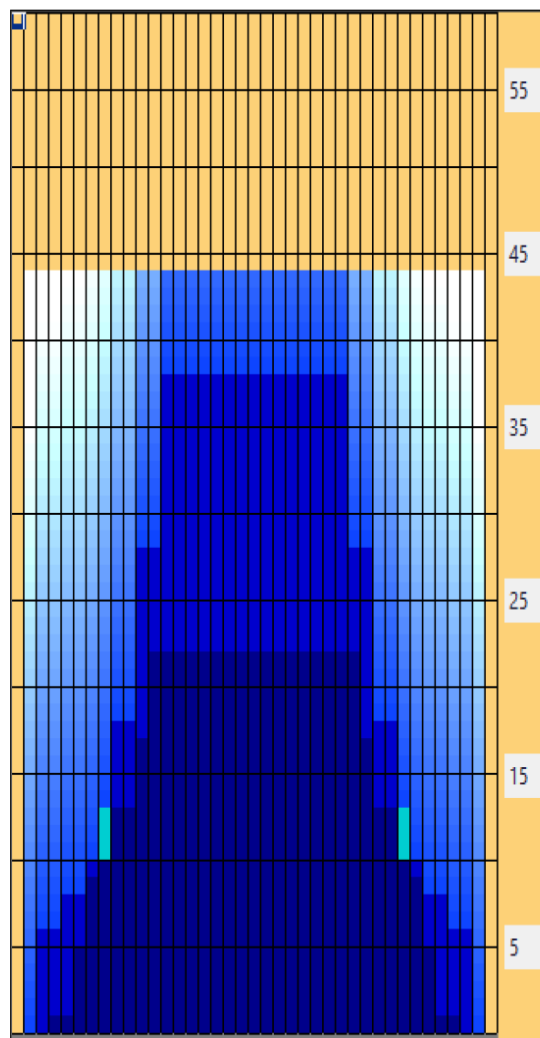
Oil Pattern Distance:	44 Feet	Reverse Brush Drop:	38 Feet	Oil Per Board:	50 uL
Forward Oil Total:	15.2 mL	Reverse Oil Total:	16.05 mL	Volume Oil Total:	31.25 mL
Forward Boards Crossed:	304 Boards	Reverse Boards Crossed:	321 Boards	Total Boards Crossed:	625 Boards

	Start	Stop	Loads	Mics	Speed	Crossed	Start	End	Feet	T.Oil
1	2L	2R	1	50	14	37	0.0	0.0	0.0	1850
2	4L	4R	1	50	14	33	0.0	1.9	1.9	1650
3	6L	6R	2	50	14	58	1.9	5.8	3.9	2900
4	7L	7R	2	50	14	54	5.8	9.7	3.9	2700
5	8L	8R	2	50	14	50	9.7	13.6	3.9	2500
6	11L	11R	2	50	14	38	13.6	17.5	3.9	1900
7	12L	12R	2	50	18	34	17.5	22.6	5.1	1700
8	2L	2R	0	50	22	0	22.6	36.0	13.4	0
9	2L	2R	0	50	30	0	36.0	44.0	8.0	0

	Start	Stop	Loads	Mics	Speed	Crossed	Start	End	Feet	T.Oil
1	2L	2R	0	40	30	0	44.0	38.0	-6.0	0
2	13L	13R	4	50	18	60	38.0	27.8	-10.2	3000
3	11L	11R	4	50	18	76	27.8	17.6	-10.2	3800
4	9L	9R	4	50	14	92	17.6	9.7	-7.9	4600
5	7L	7R	1	50	14	27	9.7	7.8	-1.9	1350
6	5L	5R	1	50	10	31	7.8	6.4	-1.4	1550
7	3L	3R	1	50	10	35	6.4	5.0	-1.4	1750
8	2L	2R	0	50	10	0	5.0	0.0	-5.0	0

Conditioner:  
Type In or Select  
One

- Forward
- Reverse
- Combined
- Buff



Item	3L-7L:18L-18R	8L-12L:18L-18R	13L-17L:18L-18R	18L-18R:17R-13R	18L-18R:12R-8R	18L-18R:7R-3R
Description	Outside Track:Middle	Middle Track:Middle	Inside Track:Middle	Middle: Inside Track	Middle:Middle Track	Middle:Outside Track
Track Zone Ratio	5.63	1.59	1	1	1.59	5.63

