

# 「HANDA CUP」・第55回全日本女子プロボウリング選手権大会

## 12/14 (木) 予選 Part I (12G)

### Mシリーズ ロングパターン (49ft)



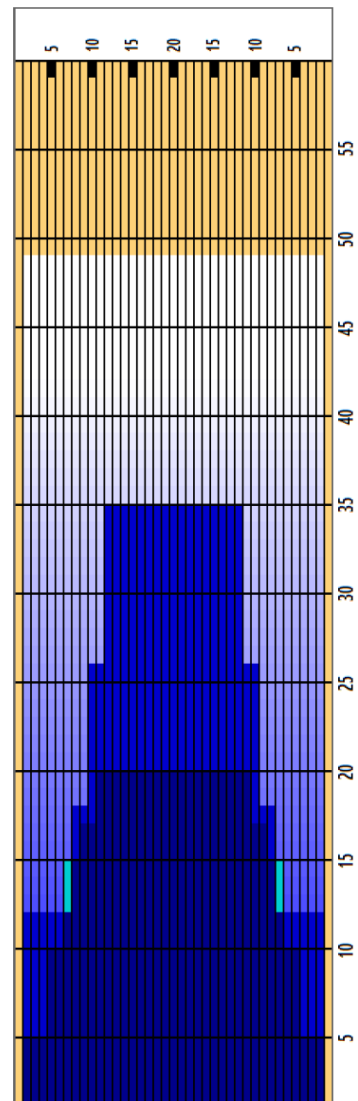
使用オイル: アイス



Oil Pattern Distance **49** Reverse Brush Drop **44** Oil Per Board **50 ul**  
 Forward Oil Total **13.45 mL** Reverse Oil Total **15 mL** Volume Oil Total **28.45 mL**

	START	STOP	LOADS	SPEED	BUFFER	TANK	CROSSED	START	END	FEET	T.OIL
1	2L	2R	3	18	3	B	111	0.0	5.1	5.1	5550
2	5L	5R	2	18	3	B	62	5.1	10.2	5.1	3100
3	7L	7R	2	18	3	B	54	10.2	15.3	5.1	2700
4	9L	9R	1	18	3	B	23	15.3	17.8	2.5	1150
5	11L	11R	1	18	3	B	19	17.8	20.3	2.5	950
6	2L	2R	0	22	3	B	0	20.3	33.0	12.7	0
7	2L	2R	0	30	3	B	0	33.0	49.0	16.0	0

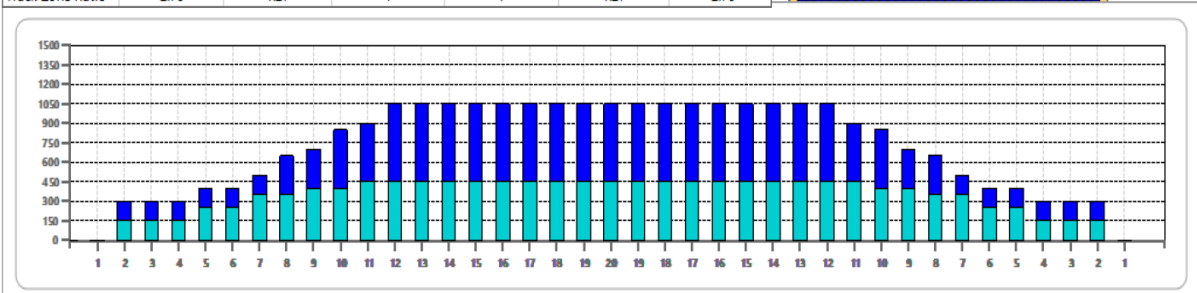
	START	STOP	LOADS	SPEED	BUFFER	TANK	CROSSED	START	END	FEET	T.OIL
1	2L	2R	0	30	3	A	0	49.0	35.0	-14.0	0
2	12L	12R	3	22	3	A	51	35.0	25.7	-9.3	2550
3	10L	10R	3	18	3	A	63	25.7	18.1	-7.6	3150
4	8L	8R	3	14	3	A	75	18.1	12.2	-5.9	3750
5	2L	2R	3	10	3	A	111	12.2	8.0	-4.2	5550
6	2L	2R	0	10	3	A	0	8.0	0.0	-8.0	0



Cleaner Ratio Main Mix NA Forward  
 Cleaner Ratio Back End Mix NA Reverse  
 Cleaner Ratio Back End Distance NA Combined

Buffer RPM: 4 = 700 | 3 = 500 | 2 = 200 | 1 = 100

Item	3L-7L:18L-18R	8L-12L:18L-18R	13L-17L:18L-18R	18L-18R:17R-13R	18L-18R:12R-8R	18L-18R:7R-3R
Description	Outside:Middle	Middle:Middle	Inside:Middle	Middle: Inside	Middle:Middle	Middle:Outside
Track Zone Ratio	2.76	1.27	1	1	1.27	2.76



# 「HANDA CUP」・ 第55回全日本女子プロボウリング選手権大会

## 12/15 (金) 予選 Part II (6G)

### Mシリーズ ミディアムパターン (41ft)

**FLEX**

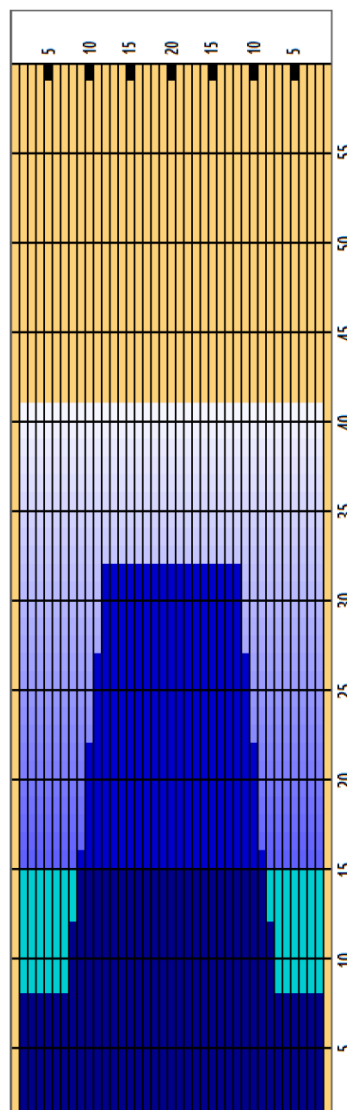
使用オイル:アイス



Oil Pattern Distance	41	Reverse Brush Drop	38	Oil Per Board	50 ul
Forward Oil Total	16.65 mL	Reverse Oil Total	13.4 mL	Volume Oil Total	30.05 mL

	START	STOP	LOADS	SPEED	BUFFER	TANK	CROSSED	START	END	FEET	T.OIL
1	2L	2R	9	14	3	A	333	0.0	15.8	15.8	16650
2	2L	2R	0	18	3	A	0	15.8	31.0	15.2	0
3	2L	2R	0	22	3	A	0	31.0	41.0	10.0	0

	START	STOP	LOADS	SPEED	BUFFER	TANK	CROSSED	START	END	FEET	T.OIL
1	2L	2R	0	30	3	B	0	41.0	32.0	-9.0	0
2	12L	12R	2	18	3	B	34	32.0	26.9	-5.1	1700
3	11L	11R	2	18	3	B	38	26.9	21.8	-5.1	1900
4	10L	10R	3	14	3	B	63	21.8	15.9	-5.9	3150
5	9L	9R	2	14	3	B	46	15.9	12.0	-3.9	2300
6	8L	8R	2	14	3	B	50	12.0	8.1	-3.9	2500
7	2L	2R	1	10	3	B	37	8.1	6.7	-1.4	1850
8	2L	2R	0	10	3	B	0	6.7	0.0	-6.7	0



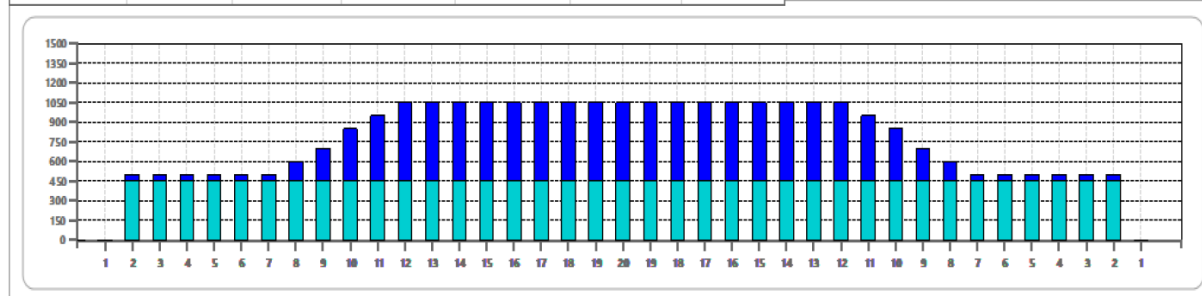
Cleaner Ratio Main Mix                    NA            Forward  
 Cleaner Ratio Back End Mix            NA            Reverse  
 Cleaner Ratio Back End Distance      NA            Combined



Buffer RPM: 4 = 700 | 3 = 500 | 2 = 200 | 1 = 100

--	--	--	--	--	--	--

Item	3L-7L:18L-18R	8L-12L:18L-18R	13L-17L:18L-18R	18L-18R:17R-13R	18L-18R:12R-8R	18L-18R:7R-3R
Description	Outside:Middle	Middle:Middle	Inside:Middle	Middle:Inside	Middle:Middle	Middle:Outside
Track Zone Ratio	2.1	1.27	1	1	1.27	2.1



# 「HANDA CUP」・ 第55回全日本女子プロボウリング選手権大会

## 12/15 (金) Part III (6G)

### Nシリーズ ショートパターン (35ft)



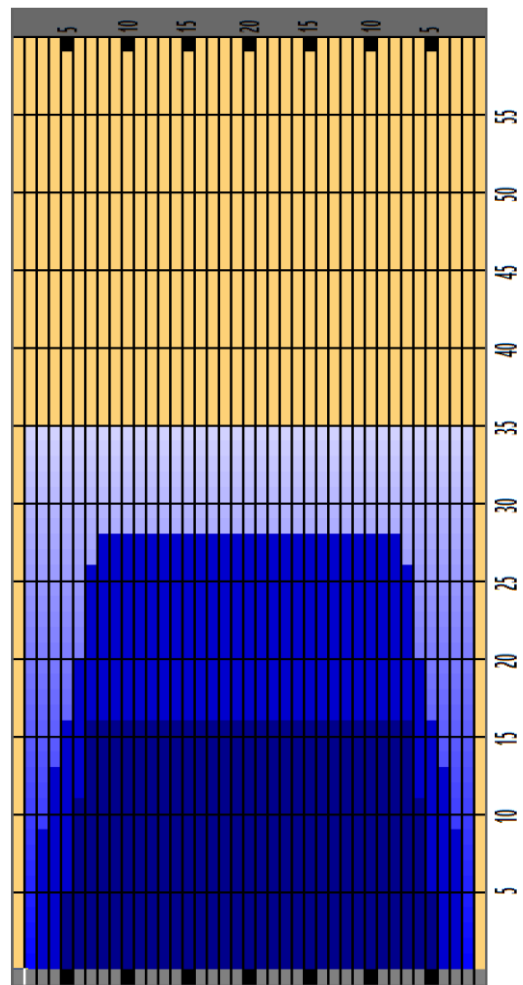
使用オイル:アイス



Oil Pattern Distance **35** Reverse Brush Drop **35** Oil Per Board **50 ul**  
 Forward Oil Total **12.1 mL** Reverse Oil Total **15 mL** Volume Oil Total **27.1 mL**

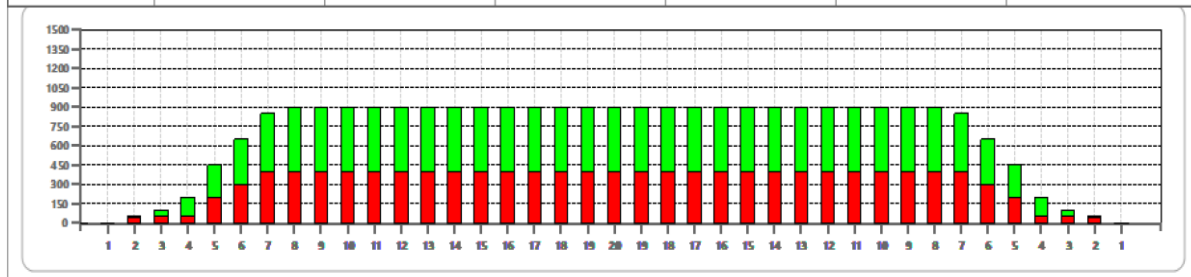
	START	STOP	LOADS	SPEED	CROSSED	START	END	FEET	T.OIL
1	2L	2R	1	14	37	0.0	0.0	0.0	1850
2	5L	5R	3	14	93	0.0	5.9	5.9	4650
3	6L	6R	2	18	58	5.9	11.0	5.1	2900
4	7L	7R	2	18	54	11.0	16.1	5.1	2700
5	2L	2R	0	22	0	16.1	27.0	10.9	0
6	2L	2R	0	26	0	27.0	35.0	8.0	0

	START	STOP	LOADS	SPEED	CROSSED	START	END	FEET	T.OIL
1	2L	2R	0	30	0	35.0	28.0	-7.0	0
2	8L	8R	1	18	25	28.0	25.5	-2.5	1250
3	7L	7R	2	18	54	25.5	20.4	-5.1	2700
4	6L	6R	2	14	58	20.4	16.5	-3.9	2900
5	5L	5R	2	14	62	16.5	12.6	-3.9	3100
6	4L	4R	2	14	66	12.6	8.7	-3.9	3300
7	3L	3R	1	14	35	8.7	6.8	-1.9	1750
8	2L	2R	0	14	0	6.8	0.0	-6.8	0



Cleaner Ratio Main Mix NA  
 Cleaner Ratio Back End Mix NA  
 Cleaner Ratio Back End Distance NA  
 Buffer RPM: 4 = 720 | 3 = 500 | 2 = 200 | 1 = 50  
 This Pattern Up Loaded From Slot # 13 In Lane  
 Machine On 9/10/2013 11:38 AM

Item	3L-7L:18L-18R	8L-12L:18L-18R	13L-17L:18L-18R	18L-18R:17R-13R	18L-18R:12R-8R	18L-18R:7R-3R
Description	Outside Track:Middle	Middle Track:Middle	Inside Track:Middle	Middle: Inside Track	Middle:Middle Track	Middle:Outside Track
Track Zone Ratio	2	1	1	1	1	2



# 「HANDA CUP」・ 第55回全日本女子プロボウリング選手権大会

## 12 / 16 (土) 準決勝(9G) 及び 決勝全日本方式ステップラダー

### Aシリーズ ミディアムパターン (41 f t)

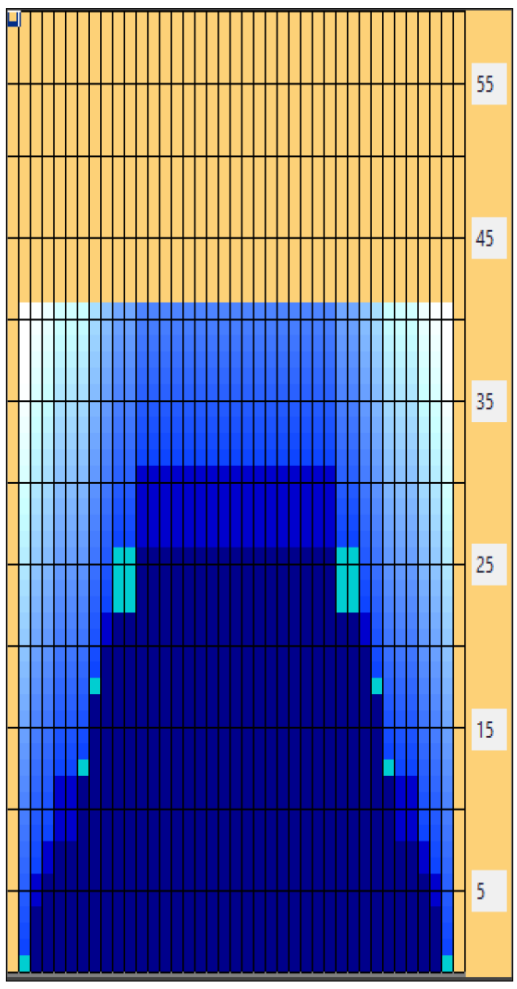
Oil Pattern Distance: **41 Feet**      Reverse Brush Drop: **31 Feet**      Oil Per Board: **50 uL**  
 Forward Oil Total: **18.85 mL**      Reverse Oil Total: **13.85 mL**      Volume Oil Total: **32.7 mL**  
 Forward Boards Crossed: **377 Boards**      Reverse Boards Crossed: **277 Boards**      Total Boards Crossed: **654 Boards**

	Start	Stop	Loads	Mics	Speed	Crossed	Start	End	Feet	T.Oil
1	2L	2R	2	50	10	74	0.0	1.4	1.4	3700
2	3L	3R	2	50	10	70	1.4	4.2	2.8	3500
3	4L	4R	1	50	14	33	4.2	6.1	1.9	1650
4	5L	5R	1	50	14	31	6.1	8.0	1.9	1550
5	7L	7R	2	50	18	54	8.0	13.1	5.1	2700
6	8L	8R	2	50	18	50	13.1	18.2	5.1	2500
7	9L	9R	1	50	18	23	18.2	20.7	2.5	1150
8	10L	10R	2	50	22	42	20.7	26.9	6.2	2100
9	2L	2R	0	50	26	0	26.9	33.0	6.1	0
10	2L	2R	0	50	30	0	33.0	41.0	8.0	0

	Start	Stop	Loads	Mics	Speed	Crossed	Start	End	Feet	T.Oil
1	2L	2R	0	50	30	0	41.0	31.0	-10.0	0
2	12L	12R	3	50	22	51	31.0	21.7	-9.3	2550
3	9L	9R	2	50	18	46	21.7	16.6	-5.1	2300
4	8L	8R	2	50	18	50	16.6	11.5	-5.1	2500
5	5L	5R	2	50	14	62	11.5	7.6	-3.9	3100
6	4L	4R	1	50	10	33	7.6	6.2	-1.4	1650
7	3L	3R	1	50	10	35	6.2	4.8	-1.4	1750
8	2L	2R	0	50	10	0	4.8	0.0	-4.8	0

Conditioner:  
Type In or Select One

- Forward
- Reverse
- Combined
- Buff



Item	3L-7L:18L-18R	8L-12L:18L-18R	13L-17L:18L-18R	18L-18R:17R-13R	18L-18R:12R-8R	18L-18R:7R-3R
Description	Outside Track:Middle	Middle Track:Middle	Inside Track:Middle	Middle: Inside Track	Middle:Middle Track	Middle:Outside Track
Track Zone Ratio	2.73	1.19	1	1	1.19	2.73

