

HANDA CUP 第57回全日本プロボウリング選手権大会

12/8 (金) 予選 Part I (12G)

Mシリーズ ロングパターン (49ft)



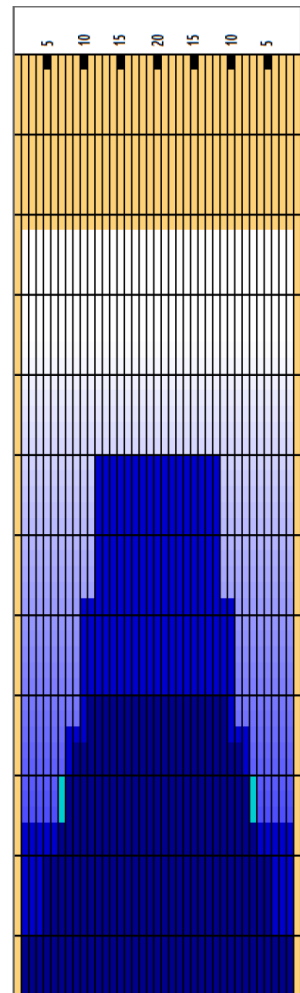
使用オイル:アイス



Oil Pattern Distance **49** Reverse Brush Drop **44** Oil Per Board **50 ul**
 Forward Oil Total **13.45 mL** Reverse Oil Total **15 mL** Volume Oil Total **28.45 mL**

	START	STOP	LOADS	SPEED	BUFFER	TANK	CROSSED	START	END	FEET	T.OIL
1	2L	2R	3	18	3	B	111	0.0	5.1	5.1	5550
2	5L	5R	2	18	3	B	62	5.1	10.2	5.1	3100
3	7L	7R	2	18	3	B	54	10.2	15.3	5.1	2700
4	9L	9R	1	18	3	B	23	15.3	17.8	2.5	1150
5	11L	11R	1	18	3	B	19	17.8	20.3	2.5	950
6	2L	2R	0	22	3	B	0	20.3	33.0	12.7	0
7	2L	2R	0	30	3	B	0	33.0	49.0	16.0	0

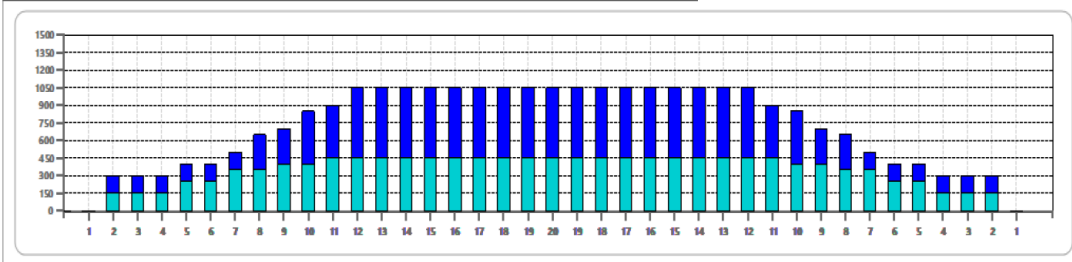
	START	STOP	LOADS	SPEED	BUFFER	TANK	CROSSED	START	END	FEET	T.OIL
1	2L	2R	0	30	3	A	0	49.0	35.0	-14.0	0
2	12L	12R	3	22	3	A	51	35.0	25.7	-9.3	2550
3	10L	10R	3	18	3	A	63	25.7	18.1	-7.6	3150
4	8L	8R	3	14	3	A	75	18.1	12.2	-5.9	3750
5	2L	2R	3	10	3	A	111	12.2	8.0	-4.2	5550
6	2L	2R	0	10	3	A	0	8.0	0.0	-8.0	0



Cleaner Ratio Main Mix NA Forward
 Cleaner Ratio Back End Mix NA Reverse
 Cleaner Ratio Back End Distance NA Combined
 Buffer RPM: 4 = 700 | 3 = 500 | 2 = 200 | 1 = 100

--

Item	3L-7L:18L-18R	8L-12L:18L-18R	13L-17L:18L-18R	18L-18R:17R-13R	18L-18R:12R-8R	18L-18R:7R-3R
Description	Outside:Middle	Middle:Middle	Inside:Middle	Middle:Inside	Middle:Middle	Middle:Outside
Track Zone Ratio	2.76	1.27	1	1	1.27	2.76



HANDA CUP 第57回全日本プロボウリング選手権大会

12/9 (土) 予選 Part II (6G)

Mシリーズ ミディアムパターン (41ft)



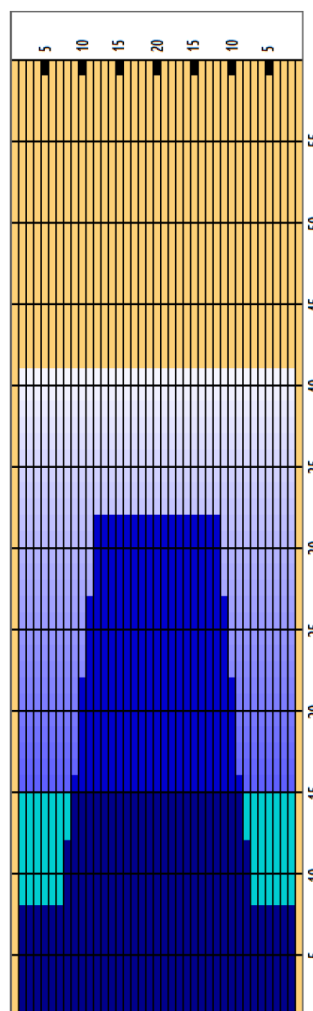
使用オイル: アイス



Oil Pattern Distance **41** Reverse Brush Drop **38** Oil Per Board **50 ul**
 Forward Oil Total **16.65 mL** Reverse Oil Total **13.4 mL** Volume Oil Total **30.05 mL**

	START	STOP	LOADS	SPEED	BUFFER	TANK	CROSSED	START	END	FEET	T.OIL
1	2L	2R	9	14	3	A	333	0.0	15.8	15.8	16650
2	2L	2R	0	18	3	A	0	15.8	31.0	15.2	0
3	2L	2R	0	22	3	A	0	31.0	41.0	10.0	0

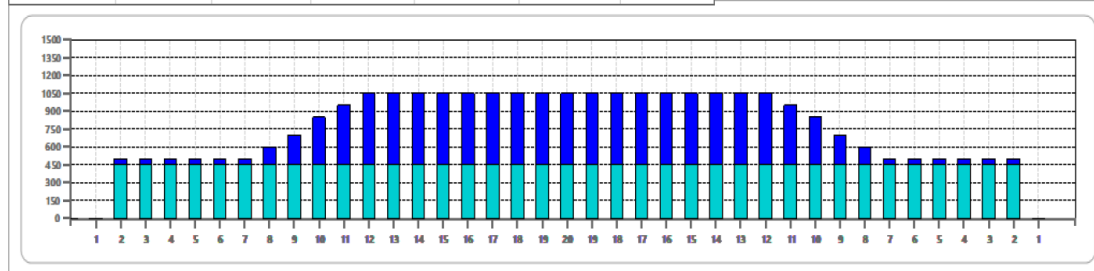
	START	STOP	LOADS	SPEED	BUFFER	TANK	CROSSED	START	END	FEET	T.OIL
1	2L	2R	0	30	3	B	0	41.0	32.0	-9.0	0
2	12L	12R	2	18	3	B	34	32.0	26.9	-5.1	1700
3	11L	11R	2	18	3	B	38	26.9	21.8	-5.1	1900
4	10L	10R	3	14	3	B	63	21.8	15.9	-5.9	3150
5	9L	9R	2	14	3	B	46	15.9	12.0	-3.9	2300
6	8L	8R	2	14	3	B	50	12.0	8.1	-3.9	2500
7	2L	2R	1	10	3	B	37	8.1	6.7	-1.4	1850
8	2L	2R	0	10	3	B	0	6.7	0.0	-6.7	0



Cleaner Ratio Main Mix NA Forward
 Cleaner Ratio Back End Mix NA Reverse
 Cleaner Ratio Back End Distance NA Combined
 Buffer RPM: 4 = 700 | 3 = 500 | 2 = 200 | 1 = 100

--

Item	3L-7L:18L-18R	8L-12L:18L-18R	13L-17L:18L-18R	18L-18R:17R-13R	18L-18R:12R-8R	18L-18R:7R-3R
Description	Outside:Middle	Middle:Middle	Inside:Middle	Middle:Inside	Middle:Middle	Middle:Outside
Track Zone Ratio	2.1	1.27	1	1	1.27	2.1



HANDA CUP 第57回全日本プロボウリング選手権大会

12/9(土) Part III (6G)

Nシリーズ ショートパターン (35ft)



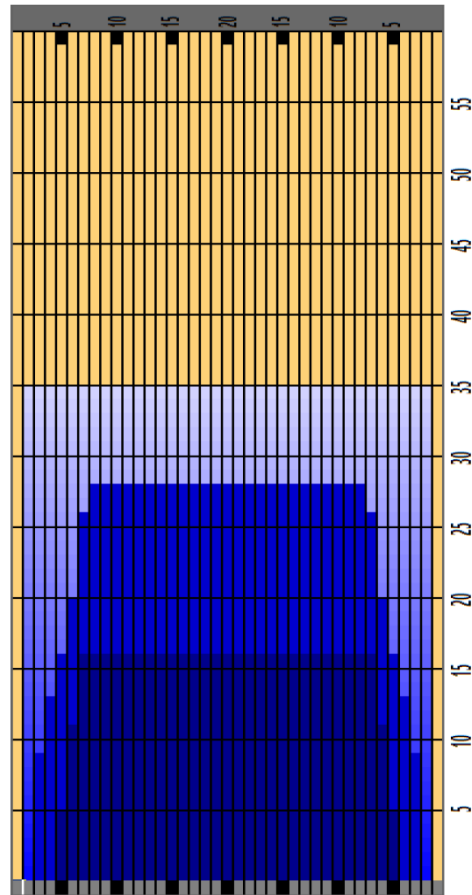
使用オイル:アイス



Oil Pattern Distance	35	Reverse Brush Drop	35	Oil Per Board	50 ul
Forward Oil Total	12.1 mL	Reverse Oil Total	15 mL	Volume Oil Total	27.1 mL

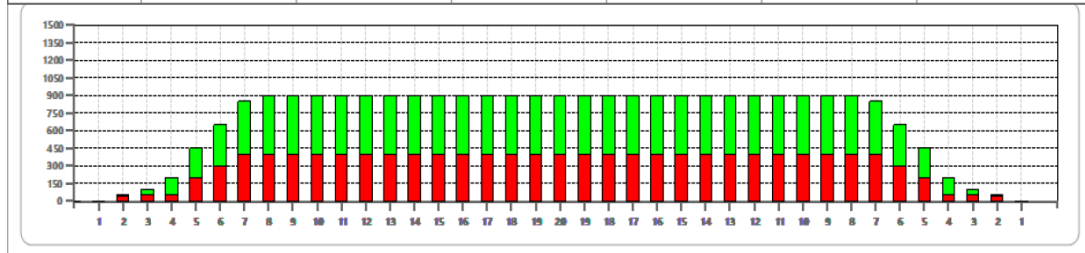
	START	STOP	LOADS	SPEED	CROSSED	START	END	FEET	T.OIL
1	2L	2R	1	14	37	0.0	0.0	0.0	1850
2	5L	5R	3	14	93	0.0	5.9	5.9	4650
3	6L	6R	2	18	58	5.9	11.0	5.1	2900
4	7L	7R	2	18	54	11.0	16.1	5.1	2700
5	2L	2R	0	22	0	16.1	27.0	10.9	0
6	2L	2R	0	26	0	27.0	35.0	8.0	0

	START	STOP	LOADS	SPEED	CROSSED	START	END	FEET	T.OIL
1	2L	2R	0	30	0	35.0	28.0	-7.0	0
2	8L	8R	1	18	25	28.0	25.5	-2.5	1250
3	7L	7R	2	18	54	25.5	20.4	-5.1	2700
4	6L	6R	2	14	58	20.4	16.5	-3.9	2900
5	5L	5R	2	14	62	16.5	12.6	-3.9	3100
6	4L	4R	2	14	66	12.6	8.7	-3.9	3300
7	3L	3R	1	14	35	8.7	6.8	-1.9	1750
8	2L	2R	0	14	0	6.8	0.0	-6.8	0



Cleaner Ratio Main Mix NA
 Cleaner Ratio Back End Mix NA
 Cleaner Ratio Back End Distance NA
 Buffer RPM: 4 = 720 | 3 = 500 | 2 = 200 | 1 = 50
 This Pattern Up Loaded From Slot # 13 In Lane
 Machine On 9/10/2013 11:38 AM

Item	3L-7L:18L-18R	8L-12L:18L-18R	13L-17L:18L-18R	18L-18R:17R-13R	18L-18R:12R-8R	18L-18R:7R-3R
Description	Outside Track:Middle	Middle Track:Middle	Inside Track:Middle	Middle: Inside Track	Middle:Middle Track	Middle:Outside Track
Track Zone Ratio	2	1	1	1	1	2



HANDA CUP 第57回全日本プロボウリング選手権大会

12 / 10 (日) 準決勝(12G) 及び 決勝全日本方式ステップラダー

Aシリーズ ミディアムパターン (41 f t)

Oil Pattern Distance:	41 Feet	Reverse Brush Drop:	31 Feet	Oil Per Board:	50 uL
Forward Oil Total:	18.85 mL	Reverse Oil Total:	13.85 mL	Volume Oil Total:	32.7 mL
Forward Boards Crossed:	377 Boards	Reverse Boards Crossed:	277 Boards	Total Boards Crossed:	654 Boards

	Start	Stop	Loads	Mics	Speed	Crossed	Start	End	Feet	T.Oil
1	2L	2R	2	50	10	74	0.0	1.4	1.4	3700
2	3L	3R	2	50	10	70	1.4	4.2	2.8	3500
3	4L	4R	1	50	14	33	4.2	6.1	1.9	1650
4	5L	5R	1	50	14	31	6.1	8.0	1.9	1550
5	7L	7R	2	50	18	54	8.0	13.1	5.1	2700
6	8L	8R	2	50	18	50	13.1	18.2	5.1	2500
7	9L	9R	1	50	18	23	18.2	20.7	2.5	1150
8	10L	10R	2	50	22	42	20.7	26.9	6.2	2100
9	2L	2R	0	50	26	0	26.9	33.0	6.1	0
10	2L	2R	0	50	30	0	33.0	41.0	8.0	0

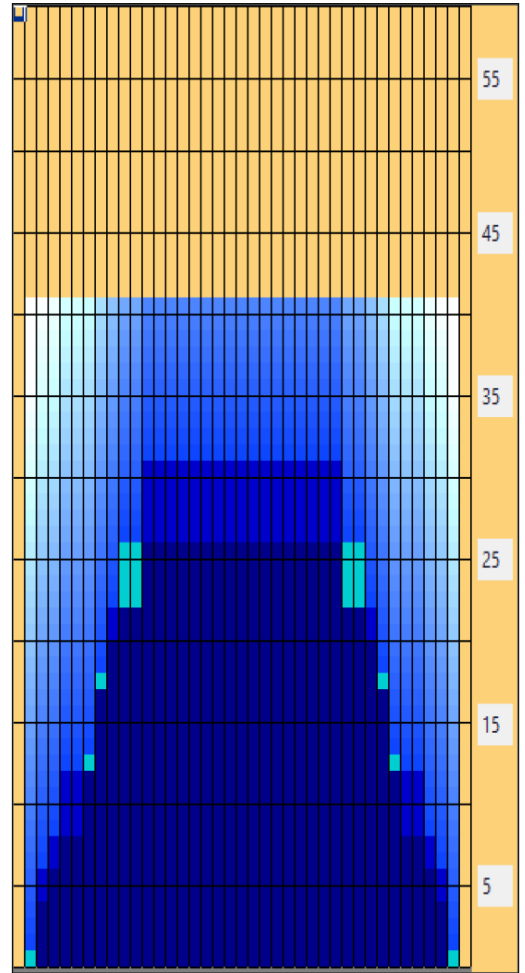
Navigation: Forward Reverse More

	Start	Stop	Loads	Mics	Speed	Crossed	Start	End	Feet	T.Oil
1	2L	2R	0	50	30	0	41.0	31.0	-10.0	0
2	12L	12R	3	50	22	51	31.0	21.7	-9.3	2550
3	9L	9R	2	50	18	46	21.7	16.6	-5.1	2300
4	8L	8R	2	50	18	50	16.6	11.5	-5.1	2500
5	5L	5R	2	50	14	62	11.5	7.6	-3.9	3100
6	4L	4R	1	50	10	33	7.6	6.2	-1.4	1650
7	3L	3R	1	50	10	35	6.2	4.8	-1.4	1750
8	2L	2R	0	50	10	0	4.8	0.0	-4.8	0

Navigation: Forward Reverse More

Conditioner:
Type In or Select One

- Forward
- Reverse
- Combined
- Buff



Item	3L-7L:18L-18R	8L-12L:18L-18R	13L-17L:18L-18R	18L-18R:17R-13R	18L-18R:12R-8R	18L-18R:7R-3R
Description	Outside Track:Middle	Middle Track:Middle	Inside Track:Middle	Middle: Inside Track	Middle:Middle Track	Middle:Outside Track
Track Zone Ratio	2.73	1.19	1	1	1.19	2.73

