

# APA PRESENTS 2022 KING'S&QUEEN'S KING



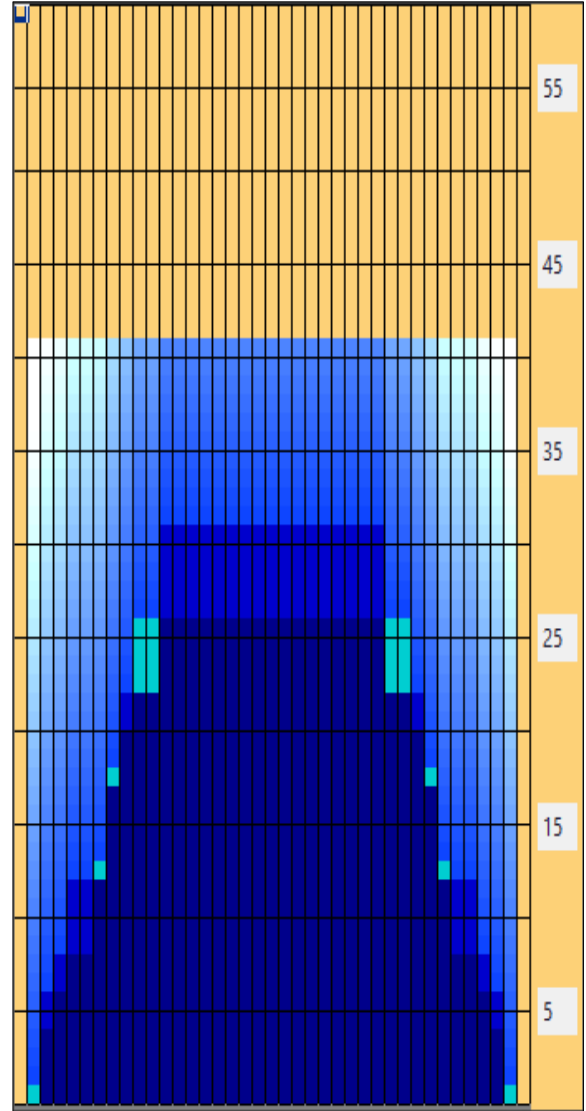
**Oil Pattern Distance:** 41 Feet      **Reverse Brush Drop:** 31 Feet      **Oil Per Board:** 50 uL  
**Forward Oil Total:** 18.85 mL      **Reverse Oil Total:** 13.85 mL      **Volume Oil Total:** 32.7 mL  
**Forward Boards Crossed:** 377 Boards      **Reverse Boards Crossed:** 277 Boards      **Total Boards Crossed:** 654 Boards

	Start	Stop	Loads	Mics	Speed	Crossed	Start	End	Feet	T.Oil
1	2L	2R	2	50	10	74	0.0	1.4	1.4	3700
2	3L	3R	2	50	10	70	1.4	4.2	2.8	3500
3	4L	4R	1	50	14	33	4.2	6.1	1.9	1650
4	5L	5R	1	50	14	31	6.1	8.0	1.9	1550
5	7L	7R	2	50	18	54	8.0	13.1	5.1	2700
6	8L	8R	2	50	18	50	13.1	18.2	5.1	2500
7	9L	9R	1	50	18	23	18.2	20.7	2.5	1150
8	10L	10R	2	50	22	42	20.7	26.9	6.2	2100
9	2L	2R	0	50	26	0	26.9	33.0	6.1	0
10	2L	2R	0	50	30	0	33.0	41.0	8.0	0

	Start	Stop	Loads	Mics	Speed	Crossed	Start	End	Feet	T.Oil
1	2L	2R	0	50	30	0	41.0	31.0	-10.0	0
2	12L	12R	3	50	22	51	31.0	21.7	-9.3	2550
3	9L	9R	2	50	18	46	21.7	16.6	-5.1	2300
4	8L	8R	2	50	18	50	16.6	11.5	-5.1	2500
5	5L	5R	2	50	14	62	11.5	7.6	-3.9	3100
6	4L	4R	1	50	10	33	7.6	6.2	-1.4	1650
7	3L	3R	1	50	10	35	6.2	4.8	-1.4	1750
8	2L	2R	0	50	10	0	4.8	0.0	-4.8	0

Conditioner:  
Type In or Select One

- Forward
- Reverse
- Combined
- Buff



Item	3L-7L:18L-18R	8L-12L:18L-18R	13L-17L:18L-18R	18L-18R:17R-13R	18L-18R:12R-8R	18L-18R:7R-3R
Description	Outside Track:Middle	Middle Track:Middle	Inside Track:Middle	Middle: Inside Track	Middle:Middle Track	Middle:Outside Track
Track Zone Ratio	2.73	1.19	1	1	1.19	2.73

