

APA PRESENTS 2022 KIN'G&QUEEN'S QUEEN



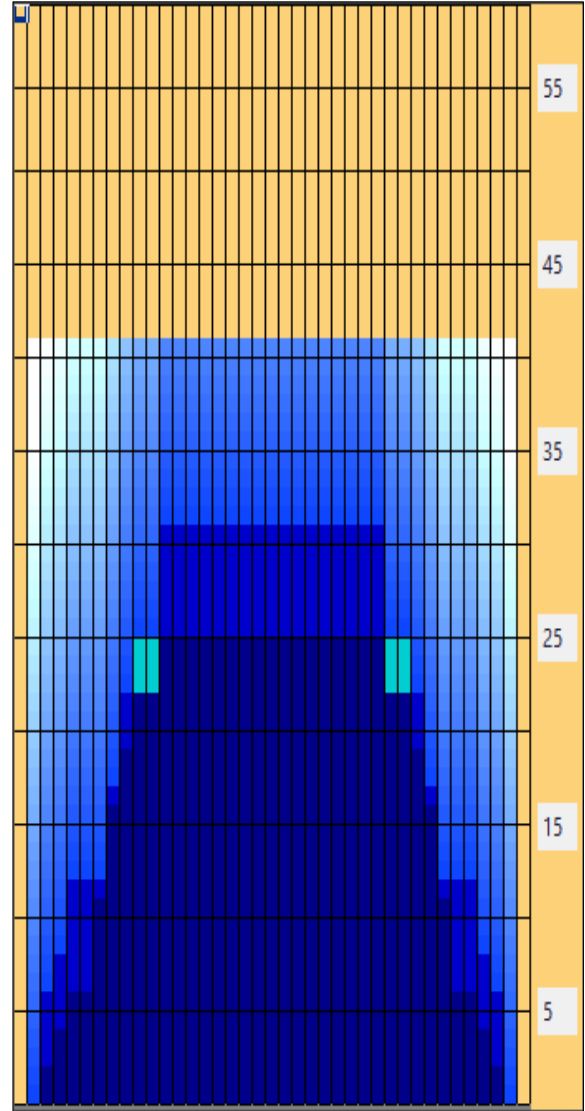
Oil Pattern Distance: 41 Feet **Reverse Brush Drop:** 31 Feet **Oil Per Board:** 50 uL
Forward Oil Total: 17 mL **Reverse Oil Total:** 13.85 mL **Volume Oil Total:** 30.85 mL
Forward Boards Crossed: 340 Boards **Reverse Boards Crossed:** 277 Boards **Total Boards Crossed:** 617 Boards

	Start	Stop	Loads	Mics	Speed	Crossed	Start	End	Feet	T.Oil
1	2L	2R	1	50	10	37	0.0	0.0	0.0	1850
2	3L	3R	2	50	10	70	0.0	2.8	2.8	3500
3	4L	4R	1	50	14	33	2.8	4.7	1.9	1650
4	5L	5R	1	50	14	31	4.7	6.6	1.9	1550
5	7L	7R	2	50	18	54	6.6	11.7	5.1	2700
6	8L	8R	2	50	18	50	11.7	16.8	5.1	2500
7	9L	9R	1	50	18	23	16.8	19.3	2.5	1150
8	10L	10R	2	50	22	42	19.3	25.5	6.2	2100
9	2L	2R	0	50	26	0	25.5	33.0	7.5	0
10	2L	2R	0	50	30	0	33.0	41.0	8.0	0

	Start	Stop	Loads	Mics	Speed	Crossed	Start	End	Feet	T.Oil
1	2L	2R	0	40	30	0	41.0	31.0	-10.0	0
2	12L	12R	3	50	22	51	31.0	21.7	-9.3	2550
3	9L	9R	2	50	18	46	21.7	16.6	-5.1	2300
4	8L	8R	2	50	18	50	16.6	11.5	-5.1	2500
5	5L	5R	2	50	14	62	11.5	7.6	-3.9	3100
6	4L	4R	1	50	10	33	7.6	6.2	-1.4	1650
7	3L	3R	1	50	10	35	6.2	4.8	-1.4	1750
8	2L	2R	0	50	10	0	4.8	0.0	-4.8	0

Conditioner:
Type In or Select One

- Forward
- Reverse
- Combined
- Buff



Item	3L-7L:18L-18R	8L-12L:18L-18R	13L-17L:18L-18R	18L-18R:17R-13R	18L-18R:12R-8R	18L-18R:7R-3R
Description	Outside Track:Middle	Middle Track:Middle	Inside Track:Middle	Middle: Inside Track	Middle:Middle Track	Middle:Outside Track
Track Zone Ratio	2.95	1.2	1	1	1.2	2.95

